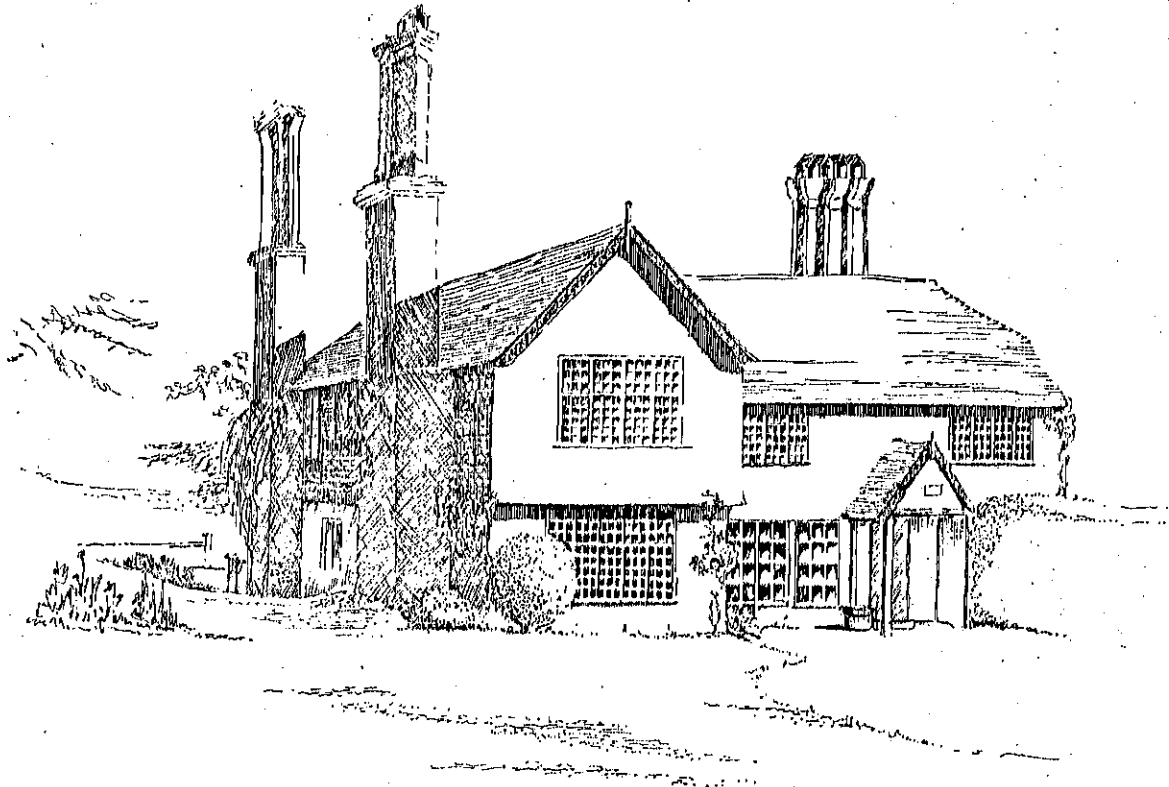


If mediaeval house at the back may have been the original house where the central chimney house now is. To this was added a jettied Tudor wing. Later the first house was demolished (? moved) and the central chimney house built in its place. There are Victorian and later additions.

Mediaeval house - appears to have been rebuilt over cellar, perhaps as kitchen for later house. Flying braces, joists, roof hipped with gables. South wall different - square panels. Crown post roof. Added 18C. brick chimney. Truss moved back to accommodate this. Cellar has been over. Shutter groove for high window. Black rafters, 2 cut for louvre.

Tudor Wing. 2 rooms on each floor, jettied to front. Houlded crown post, cambered tie beam. Close studded. Massive timbers. Side external chimneys, stone bases and diamond stacks. Large curved "down" braces. Downstairs four centred arch to fireplace has wall paintings. Now panelled. upstairs bedroom has window with shutter groove and pegged door frame for wardrobe. Now pebbledashed.

Central Chimney House Clapsed purlin roof. Square panelled framing. Plan room panelled. Roof now half hipped, but has been altered. Pegged rafters. Straight "down" braces.



A. Welfare.

The Old Rectory

*[Faint, illegible handwritten text, likely bleed-through from the reverse side of the page.]*